

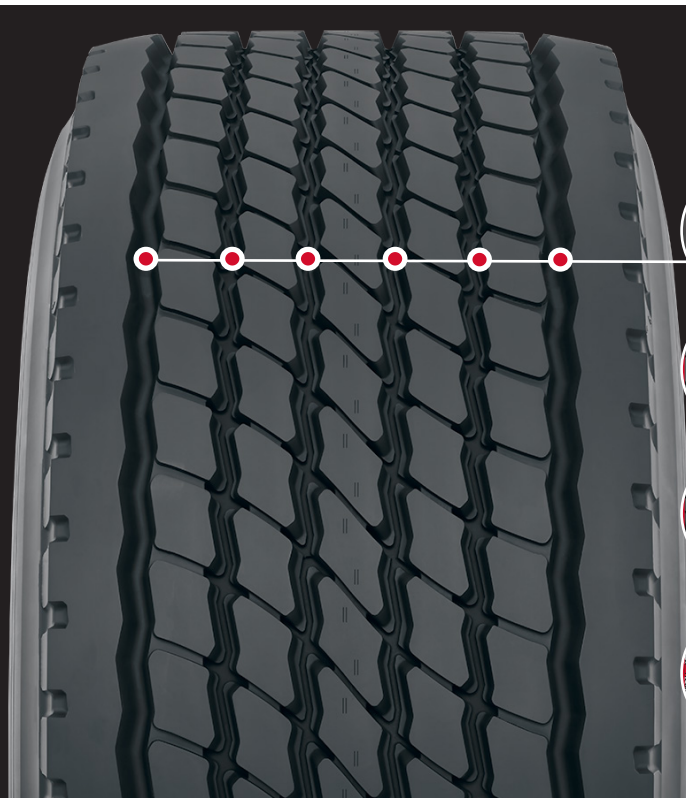
716U™ UWB

- INCREASED PAYLOAD CAPACITY
- AGGRESSIVE TRACTION
- BUILT TO LAST



THE WEIGHT-SAVING DRIVE TIRE THAT CARRIES MORE PROFITABILITY.

The all-new 716U Ultra Wide Base drive tire is designed specifically for waste, recycle and on/off-road severe service operations where maximizing payload capacity really counts. And with its reliable all-season traction and durable construction, the 716U UWB is the perfect drive tire for the job.



Load Range M (22PR)

Replacement of traditional duals with our four ultra wide base tires reduces unsprung weight without compromising total carrying capacity, allowing for a larger payload per trip.

Powerful Zig-Zag Grooves

Enhance traction and wet weather grip by efficiently evacuating water away from the tread.

Funnel Shaped Step Grooves

Prevent stones and debris from reaching the bottom of the groove where casing damage can occur.

Sidewall Protector

Extremely durable casing with an extra thick sidewall resists damage from potholes and curbing and allows for increased retreadability.

Advanced Compound

Resists scrubbing, cutting and chipping for long original tread life.

Zero Degree Belt

Adds stability for a consistently stable footprint and long, even wear.

SIZES AND SPECIFICATIONS

TIRE SIZE	PART #	LOAD RANGE	TIRE WEIGHT (lbs)	RIM WIDTHS (inches)		INFLATED DIMENSIONS (inches)		LOADED DIMENSIONS (inches)		RPM	MAX LOAD (lbs) @ MAX PSI		TREAD DEPTH 1/32"	MAX SPEED (KPH)
				PREF	ALT	OVERALL WIDTH	OVERALL DIAMETER	STATIC RADIUS	OVERALL WIDTH		SINGLE	DUAL		
455/55R22.5	120171601	M, PR 22	213.9	14.00	15.00	18.3	42.2	19.5	19.5	497	11700@130	-	23	120

Yokohama tires are subject to an ongoing development process. Yokohama Tire Canada reserves the right to change product specifications at any time without notice or obligation.



YOKOHAMA EMERGENCY SERVICE - 1.800.282.1570

With a multitude of services available, Yokohama is saying "YES" to your fleets' emergency roadside tire needs around the clock and throughout Canada and United States.