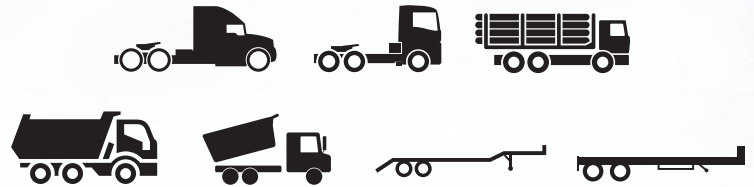


# 504C

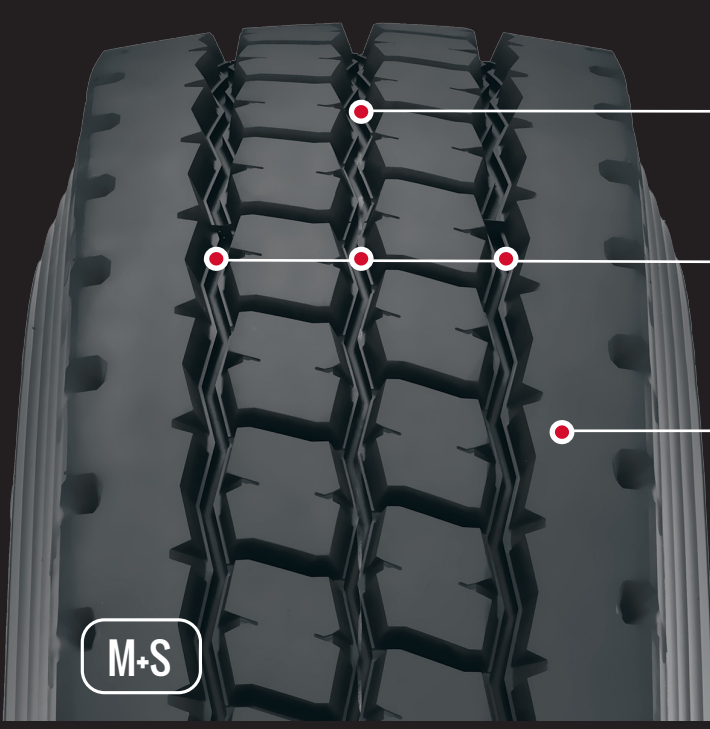
- LONG TREAD LIFE
- ENHANCED TRACTION
- DURABLE CONSTRUCTION



M+S

### LONG WEARING TRACTION

The all-new 504C is the latest in all-position durability for on- and off-road severe service operations. The H load-rated 504C represents an upgrade in durability and wet/dry traction. Its superior casing protection and a wider tread profile assure a long lasting original life and enhanced retreadability.



**Funnel-Shaped Step Grooves**  
Promote stone ejection and reduces tread-stone damage.



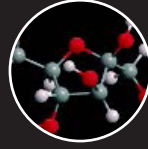
**Circumferential Grooves**  
Three circumferential grooves with a deep center groove allow for better water evacuation throughout the original tread life.



**Wide Tread**  
Provides a more stable footprint for long original tread life, better traction, excellent wet braking and easier retreadability.



**High Strength Belt Construction**  
Protects against rust and stone penetration while minimizing heat generation.



**Cut and Chip Resistant Compound**  
An advanced compound supplies cut and chip resistance without sacrificing wear performance.

### SIZES AND SPECIFICATIONS

TIRE SIZE	PART #	PLY RATING	TIRE WEIGHT (lbs)	RIM WIDTHS (inches)		INFLATED DIMENSIONS (inches)		LOADED DIMENSIONS (inches)			MAX LOAD (lbs) @ MAX PSI		TREAD DEPTH 1/32"	MAX SPEED (KPH)
				PREF	ALT	OVERALL WIDTH	OVERALL DIAMETER	STATIC RADIUS	REV / MILE	OVERALL WIDTH	SINGLE	DUAL		
255/70R22.5	120150441	16H	91.0	7.50	8.25	9.8	36.8	17.2	567	10.8	5510 @ 120	5070 @ 120	20	109
275/70R22.5	120150442	18J	114.8	8.25	8.25	10.9	38.3	17.8	546	11.9	6940 @ 131	6395 @ 131	22	109
11R22.5	120150432	16H	125.2	8.25	7.50	11.0	42.0	19.7	496	12.1	6610 @ 120	6005 @ 120	24	109
11R24.5	120150434	16H	134.8	8.25	7.50	11.1	44.0	20.6	473	12.2	7160 @ 120	6610 @ 120	24	109

Yokohama tires are subject to an ongoing development process. Yokohama Tire Canada reserves the right to change product specifications at any time without notice or obligation.



#### YOKOHAMA EMERGENCY SERVICE - 1.800.282.1570

With a multitude of services available, Yokohama is saying "YES" to your fleets' emergency roadside tire needs around the clock and throughout Canada and United States.