

506U™

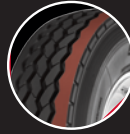
DURABILITY AND TREAD LIFE YOU CAN COUNT ON

- **LONG TREAD LIFE**
- **ENHANCED TRACTION**
- **EXTREME DURABILITY**



DURABILITY AND TREAD LIFE YOU CAN COUNT ON

Featuring extreme durability and increased original tread life, the all-new Yokohama 506U is engineered specifically to handle the enormous demands of urban sanitation trucks and on/off-highway operations.



New Tread Pattern

A wider tread created specifically for urban use incorporates a wide outside rib to resist tearing



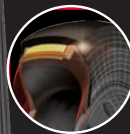
Rock Shield Platforms

Throughout the center grooves reduce stone and debris penetration for improved casing life, durability, and retreadability.



Zig-Zag Circumferential Grooves

Enhance water evacuation and provide added traction throughout the original tread life.



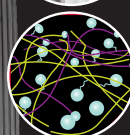
Highly Retreadable

The 506U has been designed and manufactured with optimum retreadability in mind.



Extra Thick Sidewall

Resists damage from curbs and potholes.



New Advanced Tread Compound

Resists scrubbing, cutting and chipping for long original tread life.

SIZES AND SPECIFICATIONS

Tire Size	Part No.	Load Range (P.R.)	Std. Weight (lbs)	Rim Widths (inches)		Inflated Dimensions (inches)		Loaded Dimensions (inches)			Max. Load (lbs) @ Max. PSI		Tread Depth 1/32"	Max Speed (KPH)
				Pref.	Alt	Overall Width	Overall Diameter	Static Radius	Rev/ Mile	Section Width	Single	Dual		
315/80R22.5 20L TL	120150620	20L	157.6	9.00	9.75	12.5	42.8	19.7	491	13.9	10000@130	9090 @ 110	23	109

Yokohama tires are subject to an ongoing development process. Yokohama Tire Canada reserves the right to change product specifications at any time without notice or obligation.



YOKOHAMA EMERGENCY SERVICE - 1.800.282.1570

With a multitude of services available, Yokohama is saying "YES" to your fleets' emergency roadside tire needs around the clock and throughout Canada and United States.

MAY 2021