



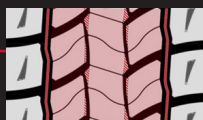
 **BluEarth<sup>®</sup> 718L**

- **FUEL EFFICIENT**
- **LONGER TREAD LIFE**
- **3PMSF TRACTION**
- **DURABLE CONSTRUCTION**



## LONG-HAUL FUEL EFFICIENCY.

With an advanced tread design and industry-leading compound, the BluEarth 718L is Yokohama's newest fuel-efficient drive tire engineered to help improve the profitability of today's long-haul fleet operations.

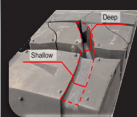


### UNITED TREAD

Lateral support between blocks helps maintain the tread's ideal shape for enhanced road contact and grip.

### CONTOURED GROOVE WALL WITH FUNNEL-SHAPED STEP

Enhances rib stiffness to resist uneven wear and prevents stone drilling from damaging the casing.



### SHALLOWER LUG-GROOVE IN SHOULDER

Increases stiffness to resist irregular wear, while deeper center lug-grooves maintain strong traction throughout the tire's life.



Enhances block support at the groove base to improve rolling resistance while maintaining reliable wet and dry traction.



TIRE SIZE	PART #	PLY RATING	TIRE WEIGHT (lbs)	RIM WIDTHS (inches)		INFLATED DIMENSIONS (inches)		TREAD DEPTH 1/32"	LOADED DIMENSIONS (inches)			MAX LOAD (lbs) @ MAX PSI	
				PREF	ALT	OVERALL WIDTH	OVERALL DIAMETER		STATIC RADIUS	REV / MILE	SECTION WIDTH	SINGLE	DUAL
295/75R22.5 16H TL	120171801	16	120.8	9.0	8.25 - 9.0	11.6	40.4	24	18.9	516	12.6	6610 @ 120	6005 @ 120
11R22.5 16H TL	120171802	16	124.7	8.25	7.5 - 8.25	11.0	41.8	24	19.5	500	12.1	6610 @ 120	6005 @ 120
285/75R24.5 16H TL	120171804	16	126	8.25	7.5 - 9.0	11.1	41.8	24	19.5	499	12.1	6780 @ 120	6175 @ 120
11R24.5 16H TL	120171803	16	133.2	8.25	7.5 - 8.25	11.1	43.8	24	20.5	476	12.1	7160 @ 120	6610 @ 120

Yokohama tires are subject to an ongoing development process. Yokohama Tire (Canada) Inc. reserves the right to change product specifications at any time without notice or obligation.



### YOKOHAMA EMERGENCY SERVICE - 1.800.282.1570

With a multitude of services available, Yokohama is saying "YES" to your fleets' emergency roadside tire needs around the clock and throughout Canada and United States.